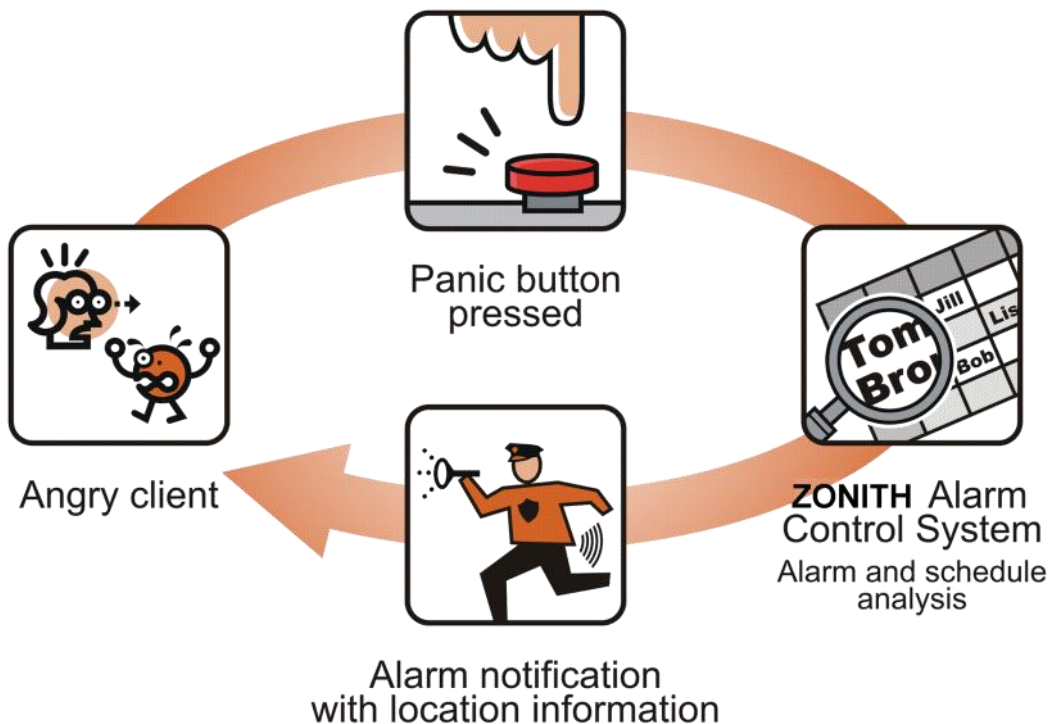




Linking Panic Buttons to Digital Radios



The **ZONITH Panic Button Solution** links discrete wireless Panic Buttons to digital radios used by security staff.

When a Panic Button is pressed, details of the person and their approximate location are instantly sent to colleagues and security staff.

Panic Button alarms can be sent to security guards radios, mobile phones, pagers, Black-Berry and PDA devices and even e-mail accounts.

Alarms can be automatically dispatched to individuals or teams and contain specific details of the person in distress.

A Real Sense of Safety — Employee Protection

Personal safety for your employees

Personal threats and attacks on people in the workplace directly affect employee attendance figures, morale and productivity. If people feel unsafe at work then employers must take all reasonable steps to minimise the risks.

The ZONITH Panic Button Solution provides a discrete wireless system that enables employees to instantly request assistance from support staff, security guards or colleges.

This combined solution sends text messages alarms from wall, desk mounted or wrist strap worn Panic Buttons straight to the display of digital radios and personal mobile devices.

This ensures that the right person can react as quickly as possible if a threat or attack is underway.

"This system has made a world of difference for our employees, as they can now safely carry out their jobs assured that help is literally just a 'push of a button' away"

*Bjarne Hansen
Operations & Security Manager
Copenhagen Jobcenter*



Wrist Strap Button
Instantly accessible for high risk employees.



Features

- ▶ Uniquely identifiable Panic Buttons.
- ▶ 100m wide area radio receiver. *)
- ▶ Provides a variety of Panic Buttons.
- ▶ Links to your existing digital radios.
- ▶ Automatically dispatches alarms.
- ▶ Records all alarm response times.
- ▶ Support multi storey installations.
- ▶ Scalable solution to include other emergency alarms sources.

Benefits

- ▶ **Improved Personal Safety:** Employees feel safe and secure while at work.
- ▶ **Rapid Response Times:** Security staff are immediately aware of threats.
- ▶ **Discrete Solution:** Wireless wall mounted, handheld or wrist worn buttons.
- ▶ **Easy Maintenance:** The solution automatically notify about drained batteries or other maintenance related issues.

Rapid Responses — Right Person at the Right Time



Wall Mounted Button.

Typically used in corridors, meeting rooms and on stair cases.



Desk Panic Buttons.

Typically mounted under desks.

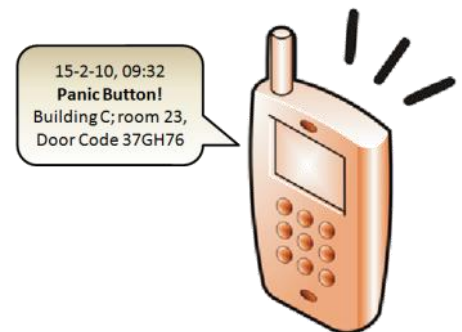


What happens when a Panic Button is pressed?

Each Panic Button has a unique identity. When a person presses a Panic Button it will emit a signal. This signal is picked up by a receiver mounted in a central location. The receiver then sends a command to the ZONITH Alarm Control System (ACS). The ACS is configured to automatically dispatch a text message to the person(s) who is responsible for the security of the individual.

The content of the dispatched text message can be configured to include specific details relating to the button. Alarms received can include the name or alias of the person in danger, floor, room number and location and if required a door entry code.

Each Central Receiver can identify up to fifty individual panic buttons. More Central Receivers can be sending alarms to the ACS. The ACS can also be expanded to receive multiple alarm inputs including fire, security and building management alarms.



Who responds to a Panic Button when its pressed?

The ACS can be configured using a web browser, to send alarm text messages to any digital radio e.g. TETRA or MOTOTRBO, mobile phone, BlackBerry or PDA, Pager or e-mail account.

The Panic Button details are received in the form of a text message shortly after the Panic Button being pressed.



Employee Protection — Rapid Responses

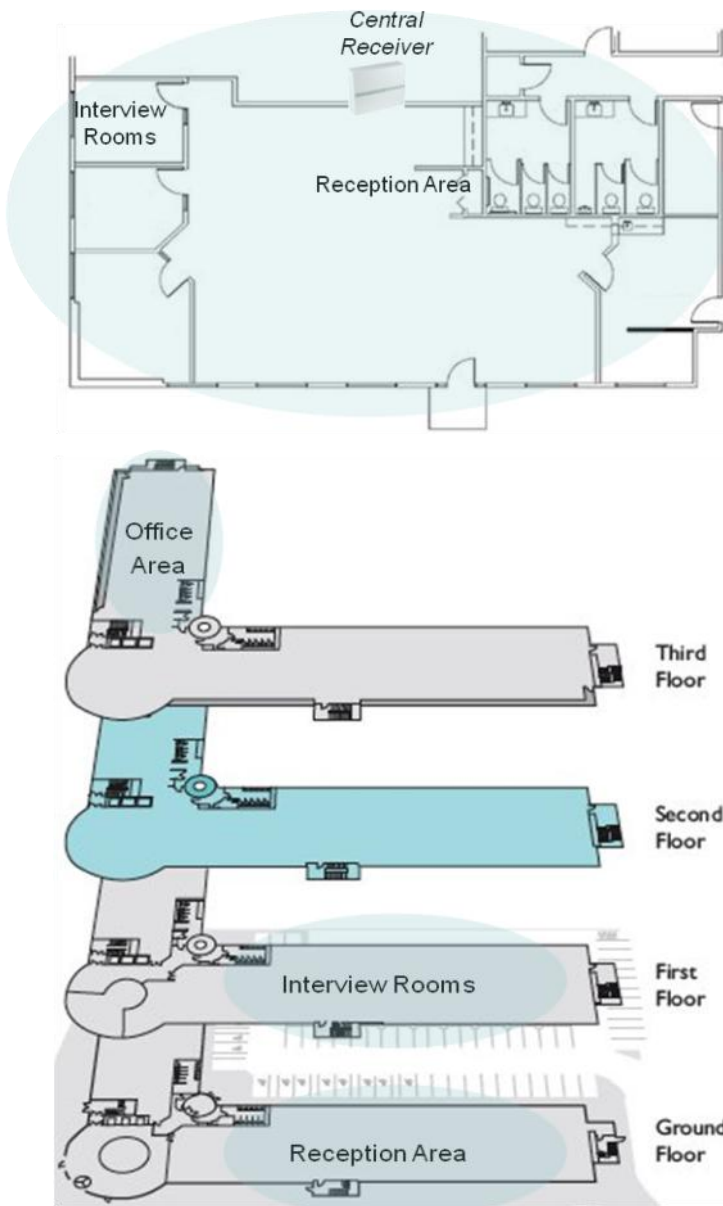
Single Floor Solution

- ▶ A single Central Receiver can monitor an area of 100m *)
- ▶ Upto 50 Panic Buttons can be monitored using a single Central Receiver and the Alarm Control System.

Multi-storey Solution

- ▶ Multiple Receivers can be linked using the buildings LAN network.
- ▶ The Alarm Control System monitors the chain of Receivers for all Panic Button alarms.
- ▶ Security guards are notified of where the alarm has been raised.

*) monitoring area depends on the actual building construction, walls, steel and other obstacles for the radio waves.



“Employees feel much safer knowing they can call help without the clients noticing”

Leif Møller, Security Manager, Danish Jobcentre